



# OPERABLE WALLS PRODUCT BROCHURE

## Who Are We

Portable Partitions Australia is the leading supplier of Room Dividers, Office Partitions, Operable Walls and Acoustic Panels. We are an Australian-owned and operated company, manufacturing a diverse range of high- quality space optimisation products that have been tested, vetted and trusted by industry leaders and customers alike for over 10 years. We have strived to become the leading supplier of the highest quality walls at the most competitive price on the market, and are continuously committed to delivering orders faster than our competitors without compromising on quality.

## Industries We Service

Our products are utilised across a wide range of industries Australia-wide:



Education



Healthcare



Government



Corporate



Retail/Private



Community



Arts



Hospitality

The universal need to divide space is relevant to most - if you need to reconfigure your space, we have the solution.



## Our Track Mounted Operable Walls

Track Mounted Operable Walls create the freedom to adapt and modify your environment as you desire, by easily dividing space to utilise the functional capacity of any space.

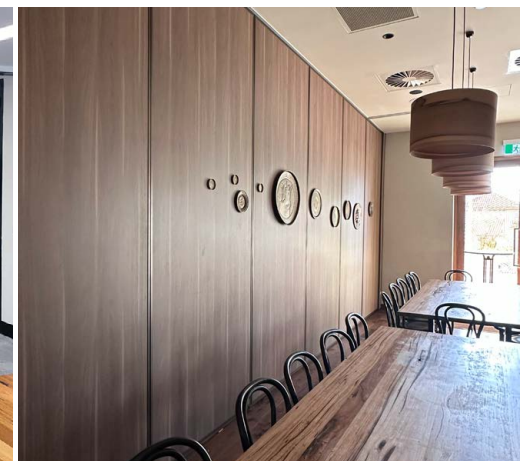
Our operable wall systems offer floor-to-ceiling acoustic coverage delivering a CSIRO-approved rating from 41dW+ through to 50dW+, providing superior soundproof and functionality. All models incorporate a 10mm trim around the perimeter of the frames with a 20mm interlocking profile with a rubber and magnetic seal to provide a completely airtight seal. All PPA Operable Walls come with standalone top and bottom retractable seals, as well as rubber sweep seals for superior acoustics.

This product is highly customisable with an expansive range of finishes and configurations to effectively accommodate a variety of environments and activities, designed to open and close seamlessly for total ease of operation.

## The 90 Series & 100 Series

The 90 series is our lightest streamlined model consisting of a 90mm panel profile designed for applications requiring a moderate to high acoustic performance, whilst also being our most affordable solution to acoustically dividing space. The 100 series is our premier model designed for environments requiring high acoustic performance and large-scale operable walls. Both of these products are highly adaptable and can be seamlessly implemented into a range of different settings to efficiently divide and utilise space.

SPECIFICATION	90 SERIES	100 SERIES
Panel Thickness	90mm	100mm
Maximum Panel Width	1200mm	1200mm
Minimum Panel Width	700mm	700mm
Acoustic Rating	41dW+ to 47dW+	48dW+ to 50dW+
Weight Per SQM	32 to 39kg	40 to 56kg
Height up to	3000mm	6000mm

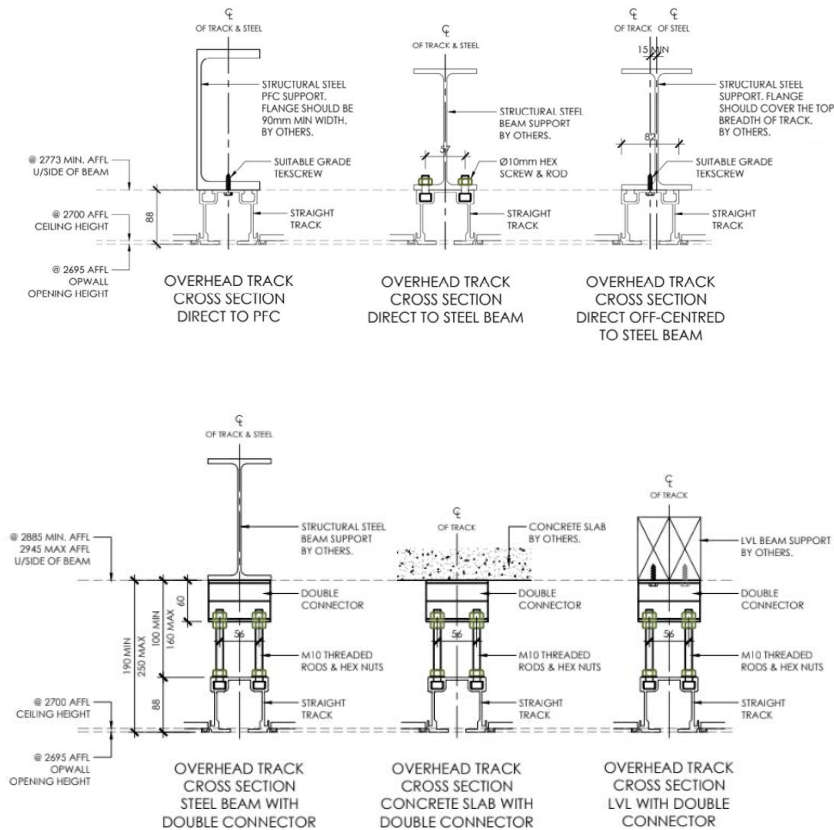




# Track Fixings

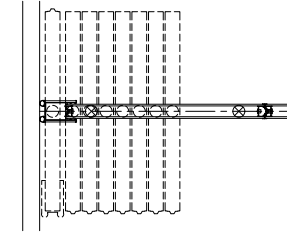
The guiding track requires either a steel, concrete or timber beam for the required track work to be fixed.

All proposed fixings will require job-specific calculations from a certifying engineer to confirm the structural beam holds the specified weight of the operable wall, depending on dimensions.



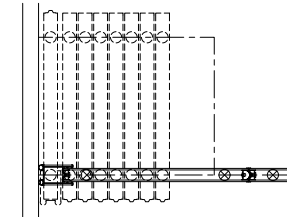
# The 90 Series & 100 Series

There are 4 different stacking configurations to complement different wall types, applications and storing requirements.



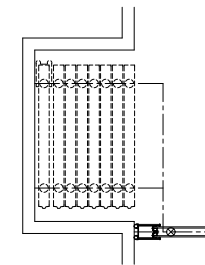
## CENTRE STACKING

This is the most common and simplest stacking system available consisting of a single 4-wheel roller located centrally in the panel. When stacked away the panels will sit horizontally against one end of the vertical track work.



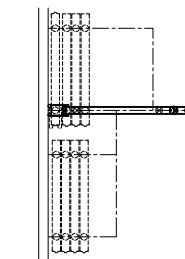
## SIDE STACKING

Each panel is hung with two rollers, allowing for ease of operation as panels are pushed along aligned with the above track. The panels are stored horizontally to one side at one end of the track in a stacking bay.



## REMOTE STACK

Similar to the side stacking configuration the panels are hung with two rollers, but the panels are stored away from the main track in a remote stacking bay.



## DOUBLE SIDE STACKING

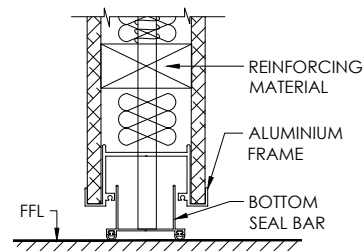
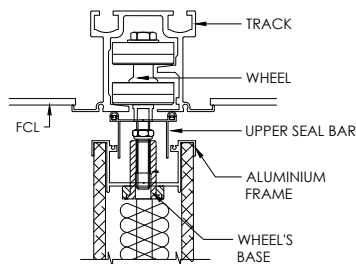
Like the side stacking system, this configuration is used for multiple corresponding operable walls operating on the same track work.



## Seal Systems

Our Operable Wall seal system consists of both top and bottom retractable seals that expand creating contact with both the above track and floor, maintaining our acoustic barrier of 41 Rw to 50Rw.

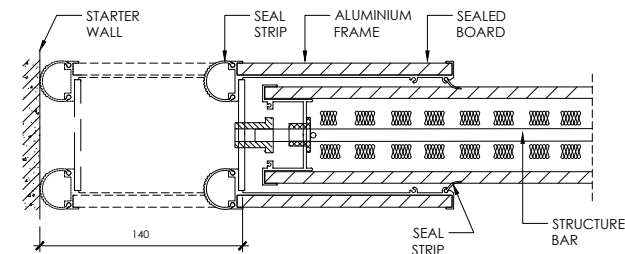
As our operable walls don't require a track on the floor, these expanding seals operate on an internal jack system, locking the panels into position to ensure lateral stability.



## Closures

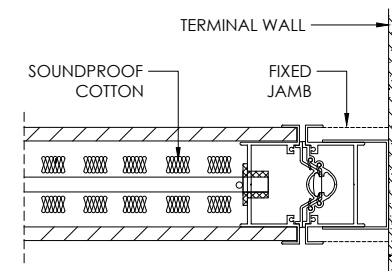
### EXPANDING JAMB PANEL

This panel traditionally creates the seal at the stacking bay end of the operable wall with an overlaying telescoping panel with a balloon seal strip that expands to lock the wall into position.



### FIXED JAMB

The fixed jamb is located against the opposing wall adjacent to where the panels are stacked away and acts as the start jamb for the first panel of the wall.



### INSET PASS DOOR PANEL

An inset pass door is an available option for wall configuration above the height of 2400mm.

# Finishes

Our operable walls are highly customisable, specially made to suit your desired requirements offering a diverse range of panel finishes and frame and head track powder-coating to incorporate our product into your environment effortlessly.

If you require a custom variation not listed in our below range of finishes, we can actively source it for you. Alternatively, if you have sourced a specified finish yourself, we will fit it to your wall as required.

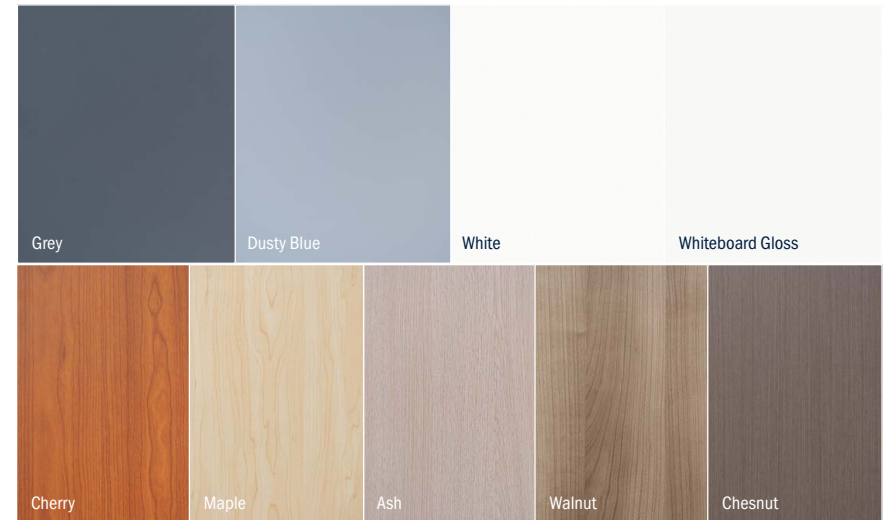
## ACOUSTIC PANEL

Durable & versatile fabric made of 100% polyester fibre to deliver superior acoustic performance. These panels comprise a soft velour finish on one side, and sleek flat pile on the other, making them pin & velcro compatible.



## PANEL FRAME AND HEAD TRACK

The base colour of the panel frames and head track is natural anodised aluminium but can be powder-coated to any desired colour at an additional price.



## HIGH-PRESSURE LAMINATE

Our high-pressure laminate (HPL) is an extremely durable decorative surface material that is wear, water and fire resistant. This finish is both functionally and cosmetically applicable to a wide variety of high-traffic environments and commercial settings.



## VINYL

Our vinyl option is a great all-round finish that is an ultra-thin and highly effective soundproofing material that is durable, non-porous and easy to clean. The material is similar in appearance to traditional wallpaper except that it has thin polyvinyl coating on the surface to increase durability.



## Portfolio: Showcasing Full Range of Colours



**PROJECT:** RACGP Brisbane, QLD  
**INDUSTRY:** Corporate / Health  
**SPECIFICATIONS:**  
 2700mm (H) x 7560mm (L)  
**FINISH:** Vinyl (Tan)



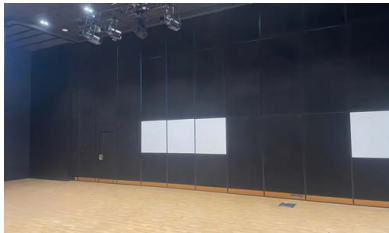
**PROJECT:** Kangan Institute, VIC  
**INDUSTRY:** Education  
**SPECIFICATIONS:**  
 2740mm (H) x 5940mm (L)  
**FINISH:** Acoustic Panel (Ash)



**PROJECT:** Rumi Restaurant, VIC  
**INDUSTRY:** Hospitality  
**SPECIFICATIONS:**  
 3300mm (H) x 7500mm (L)  
**FINISH:** Laminate Woodgrain  
 (Walnut)



**PROJECT:** Darebin RSL Club, Victoria  
**INDUSTRY:** Hospitality  
**SPECIFICATIONS:**  
 2610mm (H) x 13085mm (L) with pass door  
**FINISH:** Beige (Vinyl)



**PROJECT:** Pimlico State High School  
 Performing Arts Centre, QLD  
**INDUSTRY:** Education  
**SPECIFICATIONS:** 3 x walls,  
 each 6400mm (H) x 15000mm (L)  
**FINISH:** Acoustic Panel (Black) &  
 Whiteboard



**PROJECT:** Anzac Recreation &  
 Community Centre, NSW  
**INDUSTRY:** Community  
**SPECIFICATIONS:**  
 2740mm (H) x 5920mm (L)  
**FINISH:** MDF (White)



**PROJECT:** FKG Ripley Valley State  
 School, QLD  
**INDUSTRY:** Education  
**SPECIFICATIONS:** 6 x walls -  
 3 x 6000mm (H) x 13745mm (L) &  
 3 x 2700mm (H) x 9400mm (L)  
**FINISH:** Acoustic Panel (Chilli Red & Simba)



**PROJECT:** Engadine High School, NSW  
**INDUSTRY:** Education  
**SPECIFICATIONS:** 1 x 7285mm (H) x  
 2740mm (L) with pass door, 1 x 7295mm (H)  
 x 2760mm (L) with pass door, 1 x 3360 mm  
 (H) x 2735 mm (L) with pass door.  
**FINISH:** Acoustic Panel (Silver)



PORTABLE PARTITIONS  
— AUSTRALIA —

[portablepartitions.com.au](http://portablepartitions.com.au)

[info@portablepartitions.com.au](mailto:info@portablepartitions.com.au)

1300 731 397